

# IN-BENCH PITCHER RINSER CLEANING INTRUCTIONS



The following cleaning procedure should be completed nightly at close of store. Failure to complete this cleaning procedure can result in poor operating drains. We highly suggest using the following cleaning procedure to keep your rinser in pristine condition.

## **You Will Need:**

- 1 x Cafetto Daily Milk Frother Cleaner
- 1 x soft cloth
- 1 x 2 litre container (wide enough to soak the Actuator Plate)

## **Cleaning the Drain Tray, Actuator Plate, and Rinsers Surfaces:**



Add 50ml of Daily Milk Frother Cleaner to 1 litre of warm water.



Remove the drain tray.



Unscrew the spray valve from the rinser body.



Remove the Actuator Plate.



# IN-BENCH PITCHER RINSER CLEANING INTRUCTIONS



Add the removed parts to the Daily Milk Frother Cleaner solution. Allow the parts to soak while cleaning the remainder of the rinser.



Dip a soft cloth into the diluted cleaning solution and use to wipe down the surfaces of the rinser. Remove soaking parts from cleaning solution and rinse.



Pour the remaining diluted solution into the rinser slowly and allow the solution to drain. This will clean the drain piece and drain hose.



Built-up solids may need mechanical/ hand agitation to remove.



# IN-BENCH PITCHER RINSER CLEANING INTRUCTIONS



9.



Once complete and all milk residue has been removed, give the entire unit a final rinse with clean water.

10.



Reassemble the Drain Tray,

11.



Actuator Plate

12.



and Spray Valve.

The rinser is now ready for the next day's operation.

# IN-BENCH PITCHER RINSER

## INSTALLATION INTRUCTIONS



### Preparing Bench for Installing Main Body

- Remove rinser from packaging and measure the physical unit prior to cutting bench (see image #1)
- Cut hole in bench/counter top and place rinser into position

**Note:** Do not cut out bench top surfaces prior to receiving your rinser: Due to slight variations in manufacturing design and the varying requirements of bench materials, it is strongly recommended to have the physical vessel rinser on-hand prior to cutting into bench top surfaces. Rhino Coffee Gear does not take responsibility for errors concerning installation and provides the sizes and dimensions as a layout guide only.

### Identify all Parts:



1. 1 x SINK
2. 1 x DRAIN OUTLET
3. 1 x SPINJET SPRAY MECHANISM
4. 1 x ACTUATOR STAR
5. 1 x JOHN GUEST HOSE ADAPTER

### Connecting the Spray Valve:

1. Remove nut, metal washer and silicone seal from the spray valve
2. Insert spray valve into the top side of the rinser





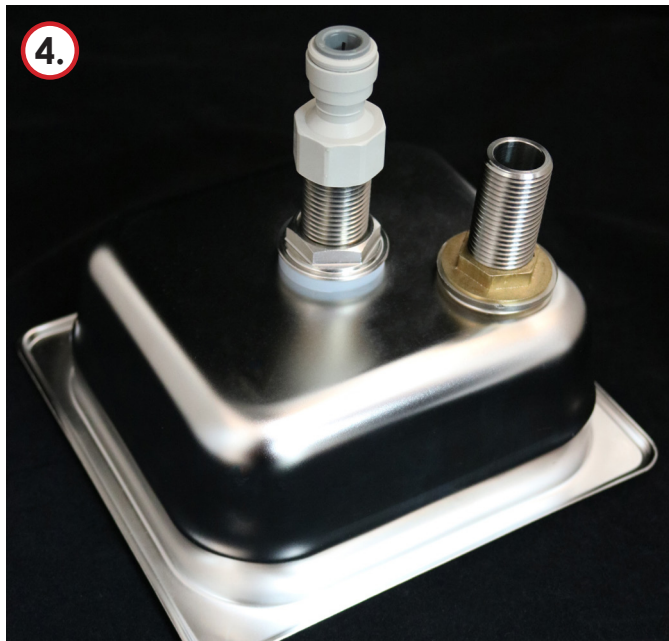
# IN-BENCH PITCHER RINSER

## INSTALLATION INTRUCTIONS



### Connecting the Spray Valve cont:

3. Locate the silicone seal, metal washer and fixing nut to the underside of the rinser and tighten.
4. Secure the John Guest fitting to the spray valve (use thread seal tape if necessary)



### Connecting the Spray Valve cont:

5. Remove SpinJet and metal washer from the top of the spray valve then attach locate activation star (flat side facing upwards) onto the valve.
6. Place metal washer and spinjet back onto the valve and secure.



# IN-BENCH PITCHER RINSER INSTALLATION INTRUCTIONS



Your rinser is now ready to be installed into the bench.



## Connecting Water Supply

Equipment is to be installed with adequate backflow protection to comply with applicable federal, state and local codes.

- Cold water connection only.
- Operating Pressure Range should be limited to 350 KPA or 35PSI

Once your rinser has been installed, you can connect main water line (3/8" hose) and drain.

Note: drain barb/fittings are not included, braided hose/ flexy or plastic drain hose/john guest tubing can be used, this has been left to the users preference.



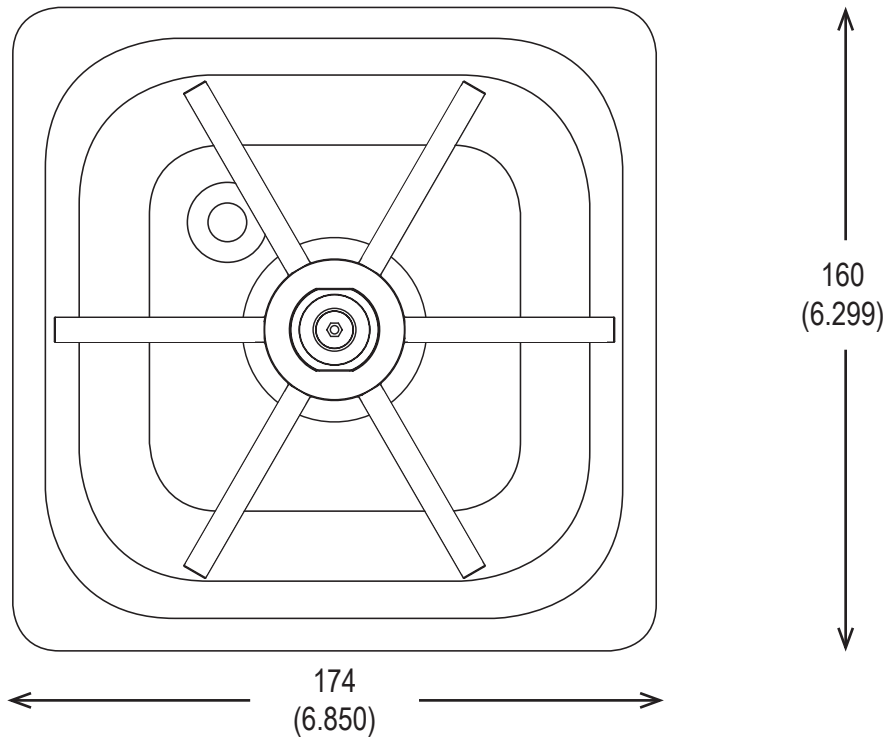
# IN-BENCH PITCHER RINSER

## INSTALLATION INSTRUCTIONS



**RHPR150-S**

**150mm Square In Bench Pitcher Rinser**



### Standard Inclusions

- 1 x Sink
- 1 x Drain Outlet
- 1 x Spinjet Spray Mechanism
- 1 x Actuator Star
- 1 x John Guest Hose Adapter

### Product Specifications & Features

- *The Spinjet Valve sprays and spins at the same time creating a more robust mechanical cleaning action than regular rinsing valves. It is ideal for plungers using tea leaves, stubborn coffee grounds, and milk and other residues that can often be difficult to clean.*
- *Compact design is perfect for smaller bench spaces.*
- *Easy installation.*
- *Actuator Star design helps to prevent the build up of milk residue and other residues.*
- *304 Stainless Steel construction.*
- *No sharp edges; corners are rounded for safety.*
- *NSF Certified*





# RHINO® HONEYCOMB VESSEL RINSERS



**EFFECTIVE MECHANICAL CLEANING** - The Spinjet Valve sprays and spins at the same time creating a more robust mechanical cleaning action than regular rinsing valves. It is ideal for plungers using tea leaves, stubborn coffee grounds, and milk and other residues that can often be difficult to clean.

**SUPERIOR DRAINAGE** - The honeycomb grate design on the RHPR300-S minimises the surface area of the drain tray, reducing static build-up of liquids and making cleaning easy. The low profile body is optimally sloped and angled to ensure effective removal of liquids, reducing common odours caused from static waste. A large drain outlet and wide grate-free opening near the drain creates a convenient location to quickly discard larger volumes of liquid.

**LARGER VESSEL OPTIONS** - The Actuator Star diameter allows both small and larger vessels to be cleaned easily. An ideal add-on for blender jugs and other larger vessels is the Blender Adapter Kit. This kit includes an extension rod and a larger actuator to suit plungers, milkshake cups, and popular blender jugs such as Blendtec and Vitamix.



**300mm  
Honeycomb  
Spinjet Rinser  
RHPR300-S**



**600mm  
Honeycomb  
Spinjet Rinser  
RHPR600-S**

## STANDARD INCLUSIONS

- |                   |  |
|-------------------|--|
| 1 x Sink          | 1 x Actuator Star                      |
| 1 x Drain Tray    | 1 x 3/8" Inch John Guest Inlet Adapter |
| 1 x Spinjet Valve | 4 x Mounting Clips                     |
| 1 x Drain         |  |

## YOU WILL NEED:

- 1 x Pressure Limiting Valve
- 1 x Water Hose & Fittings
- 1 x Drain Hose

## STANDARD VESSEL RINSERS

RHINOWARES USA, Inc  
RHPR600-S  
Vessel Rinser-Spinjet  
600mm



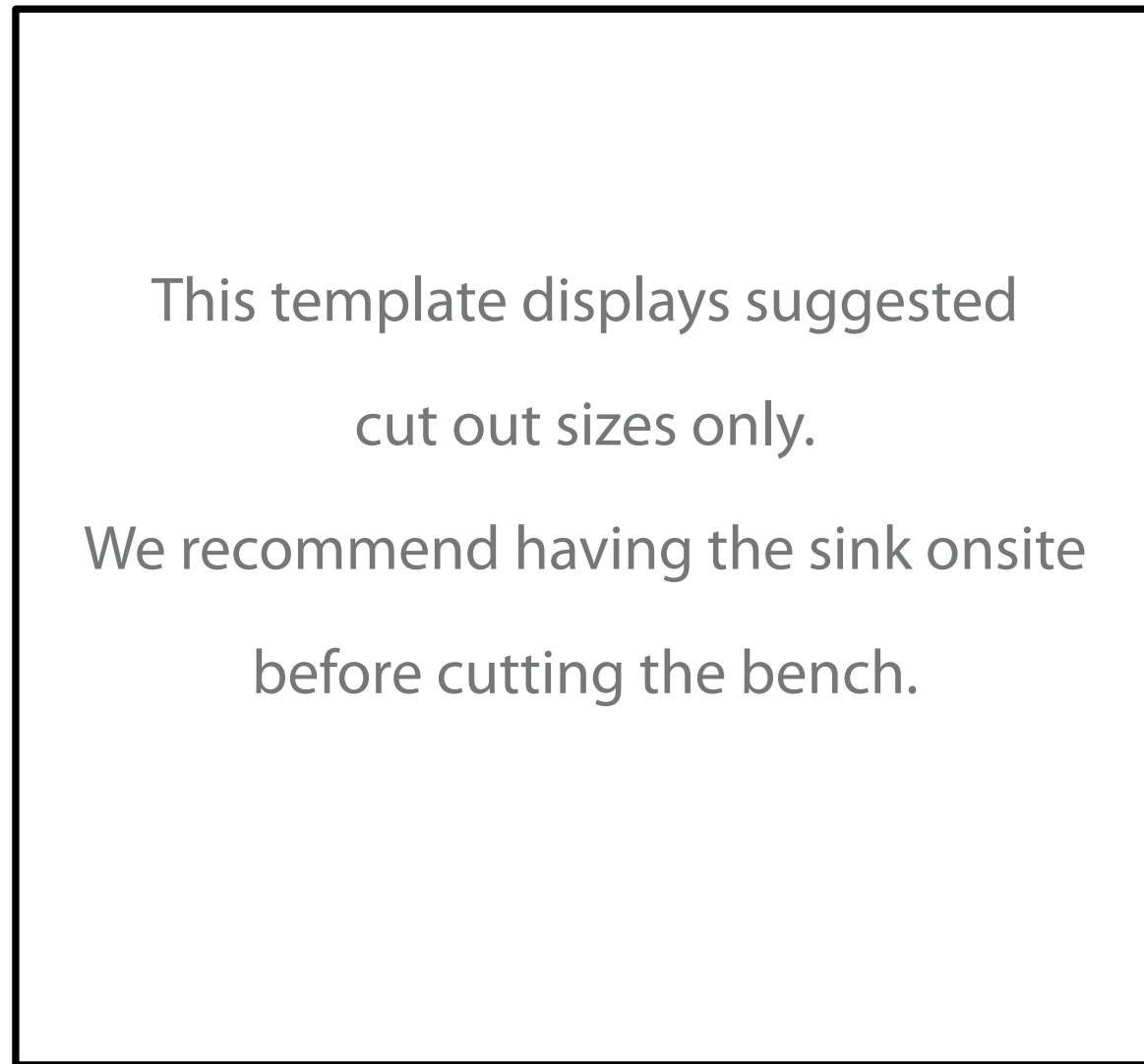
**600mm  
Vessel Rinser  
RHPR600**





# RHINO™ RHPR150-S CUT OUT TEMPLATE

154mm/6.06in

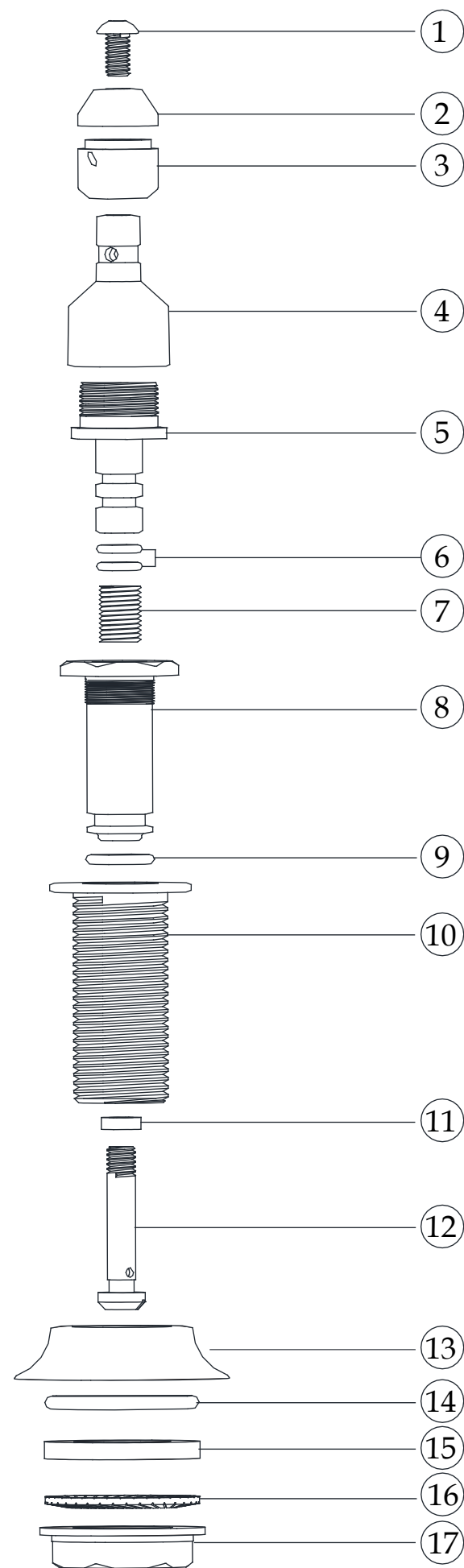


This template displays suggested  
cut out sizes only.

We recommend having the sink onsite  
before cutting the bench.

142mm  
/5.59in





Item	Part Name	Material	Specification	Quantity
1	Vented Cap Screw	SUS304	Brush	1
2	Spin Barrel Cap	SUS304	Brush	1
3	Spin Barrel	SUS304	Brush	1
4	Spin Barrel Stem	PA66		1
5	Spray Head Stem	SUS304	Polish	1
6	Spray Head Stem O-Ring	Silicon		2
7	Spray Head Stem Spring	SUS304		1
8	Inner Valve Body	SUS304	Polish	1
9	Inner Valve Body O-Ring	Silicon		1
10	Outer Valve Body	SUS304	Polish	1
11	Actuator Pin Seal	Silicon		1
12	Actuator Pin	SUS304	Brush	1
13	Valve Riser	PA66		1
14	Valve Riser O-Ring	Silicon		1
15	Outer Valve Body Bottom Seal	Silicon		1
16	Bottom Seal Washer	SUS304		1
17	Valve Assembly Nut	SUS304		1