



## HydroTap G5 BCHA Celsius All-in-One Arc Chrome

Boiling Chilled



**Finish:** Chrome

**Product code:** H57784Z00AU

**Capacity:** Residential

Zip HydroTap Design Range CELSIUS All-In-One Boiling & Chilled Filtered water, plus Hot and Cold washing up water from a single tap (hot and cold water supply required). The system features a single under bench command centre including full colour interactive touch screen display with pin code protection and customisable settings including boiling water safety mode, 2 energy saving modes including ON/OFF timers and 2 hour sleep mode, 'Quiet' mode with automated intelligent fan speed adjustment, antimicrobial protection impregnated into key water paths for enhanced hygiene, 100% water efficient air cooled technology, and 0.2 micron water filtration.

# Specifications

Product name	HydroTap G5 BCHA Celsius All-in-One Arc Chrome
Product code	H57784Z00AU
Filtered water type	BCHA
Product approvals	WaterMark, RCM, ARC
WELS rating	5 Star, 6.0 litres
Warranty	3-years comprehensive parts and labour or 5-years with a Zip Certified Installation
Chilling Technology	Air cooled technology making it 100% water efficient

# Plumbing

Water supply requirements	Cold and Hot
Water connection	1/2" BSP (G1/2)
Water valves	Integrated 500kPa Pressure limiting valve and Dual Check Valve
Water pressure	Min 170kPa - Max 700kPa

# Electrical

Power rating	1.8kW 220-240V 50Hz
Power supply	1 × 10 Amp socket outlet

# Tap design

Tap	Zip HydroTap Design Range CELSIUS All-In-One ARC Tap (Chrome)
HydroTap style	Celsius All-In-One Arc
Finish	Chrome
Disability options	Unavailable

# Command centre

Dimensions	W280mm x D478mm x H333mm
------------	--------------------------

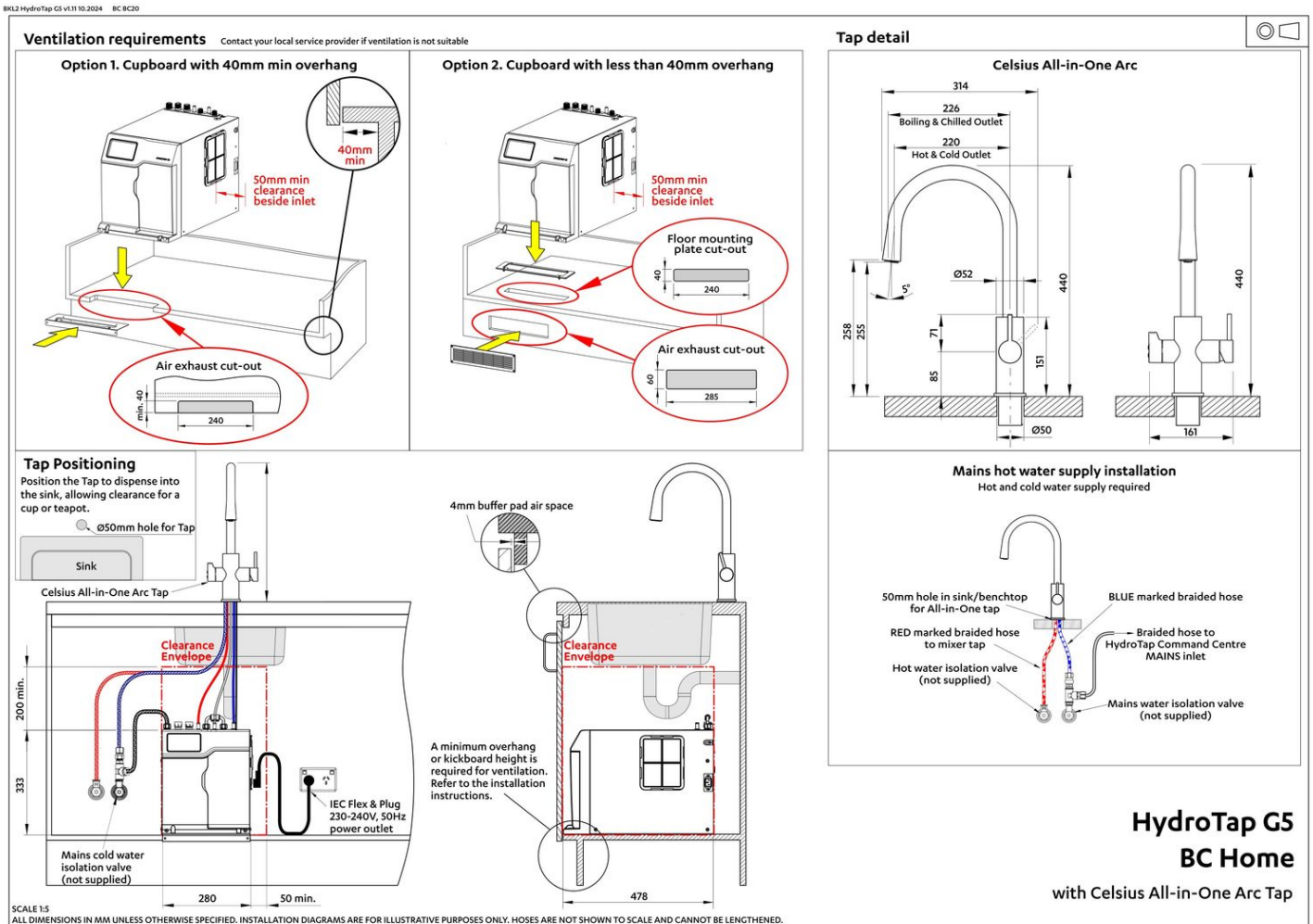
# Installation

## Installation requirements

1. Installation and connection of your Zip HydroTap must be carried out by a qualified person, observing national and local regulations.
2. You will require suitable mains electrical and drinking water connections, plus waste water drainage. The HydroTap must be installed to within the limits of the hose and cable lengths supplied.
3. **Discrete cabinetry cut outs are required for airflow. 40mm minimum clearance on cupboard base overhang required otherwise alternative installation options are available.**
4. Installation on most bench tops is straightforward however some stone bench tops may require a specialised cutting service.
5. Installation by Zip Professional Service can be arranged with a phone call or through [www.zipwater.com/book-service-visit](http://www.zipwater.com/book-service-visit)

## Files

Installation Layout 3D (DWG)



Installation Layout (PDF)

Tap Detail (DWG)



# Certifications



OHS  
ISO 45001



Environment  
ISO 14001



Quality  
ISO 9001



Health & Safety (PDF)



Environment ISO (PDF)



Quality ISO (PDF)



Environmental Product Declaration Brochure (PDF)



EPD (PDF)



ARC (PDF)



Filter performance (PDF)



HydroTap Clean SDS (PDF)

# Manuals & brochures



Brochure (PDF)



Instruction manual (PDF)



Quick guide (PDF)



Tap operation label (PDF)



User manual (PDF)

Download all